

# Micro Control Systems

Solutions for Standalone  
Machine Development



One stop solution for industrial  
products and services

# Micro800™ Controller Family

Each controller is cost and performance optimized for specific applications



12 pts

## Micro810®

Programmable relay replacer and timer - 8 A relay outputs, analog inputs

## Micro820®

For smaller standalone machines and remote automation

20-36 pts

EtherNet/IP®

Embedded analog I/O



## Micro830®

For standalone machines with motion

10-88 pts



## Micro850®

For standalone machines with motion, more I/O and Ethernet connectivity

24-192 pts

EtherNet/IP®



## Micro870®

For larger standalone machines with motion, even more I/O, more memory and Ethernet connectivity

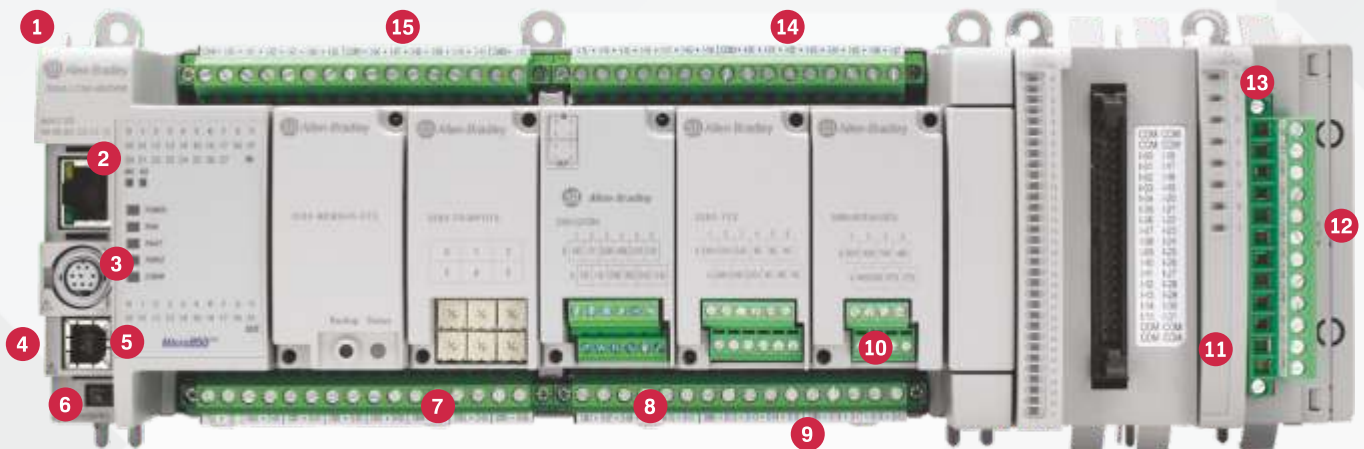
24-304 pts

EtherNet/IP®



# Micro850<sup>®</sup> controller anatomy

Customizable with plug-in and expansion



- |  |   |   |
|--|---|---|
| 1. Embedded 24V DC power supply  | 6. 12/24V sink/source, relay output models                        | 11. Support a maximum of 192 I/O points               |
| 2. Ethernet  | 7. Run/Program Switch   | 12. Bus terminator 2085-ECR                           |
| 3. RS232/485 Serial port (non-isolated)                                    | 8. DIN rail or panel mount  | 13. Up to 4 expansion I/O modules                     |
| 4. USB   | 9. Removable terminal blocks on both controller and expansion I/O | 14. High-speed inputs and outputs (DC inputs/outputs) |
| 5. Optional AC power supply (isolated) attaches to left side of controller | 10. Up to 5 plug-in slots   | 15. Support up to 3 axes of motion with PTO           |

# Micro870<sup>®</sup> controller

Highest memory and I/O



**NEW**

- 2080-LC70-24AWB: 14-pt AC input, 10-pt relay output
- 2080-LC70-24QBB: 14-pt DC input, 10-pt DC output
- 2080-LC70-24QWB: 14-pt DC input, 10-pt relay output

- 2x the program and data memory capacity of Micro850<sup>®</sup> controller.
- Up to 20,000 steps.
- Additional memory provides more programming freedom.
  - Less need to optimize memory consumption.
  - Enables more modular programming with user-defined function blocks and user-defined functions.

Up to 8 expansion I/O modules  
Up to 304 local I/O



Plug-in modules to customize base controller with more I/O and communication ports

**2085-EP24VDC**

Expansion power supply module is required when configuring more than 4 expansion I/O modules

**EtherNet/IP<sup>™</sup>**

- Ethernet, Serial and USB ports
- Native EtherNet/IP, Modbus-TCP/IP, Modbus RTU, ASCII
- Open socket programming



- PID with autotune
- Four 100 kHz high-speed counter (HSC)
- Two 100 kHz pulse train output (PTO)
- PLCopen motion instructions

**2080-MEMBAK-RTC2**

- New memory backup module with larger memory capacity to support Micro870<sup>®</sup> projects
- Compatible with both Micro850<sup>®</sup> and Micro870<sup>®</sup> controllers

**Micro870<sup>®</sup> controller scales the Micro800<sup>™</sup> family up to CompactLogix<sup>™</sup> 5370 L1 controller**

- 2080-LC70-24QBB and 2080-LC70-24QWB: Connected Components Workbench<sup>™</sup> software Version 11 or later required
- 2080-LC70-24AWB: Connected Components Workbench<sup>™</sup> software Version 12 or later required



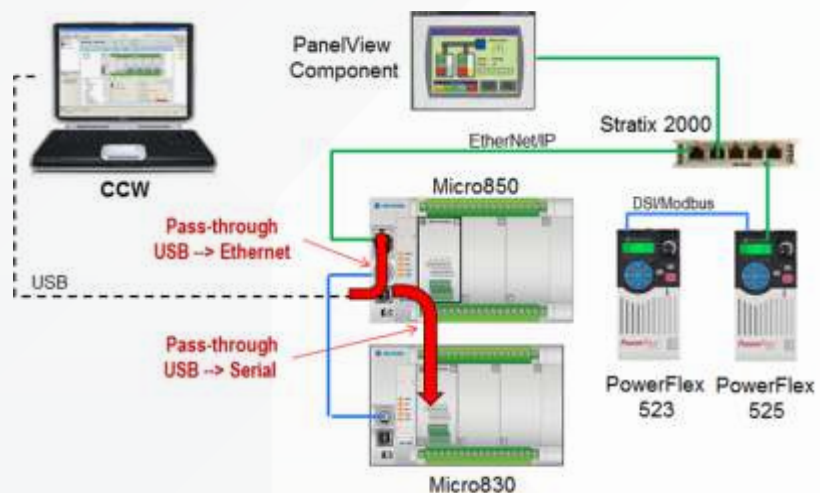
## Micro800™ controllers offer a wide variety of connectivity options

- Offers a wide variety of communication options for device connectivity to meet your application needs.
- Plug and play USB port makes it easy to connect Connected Components Workbench™ software to Micro800™ controllers.
- Improves efficiency during machine development and commissioning phase.
- CIP pass-through saves time and effort while configuring your system and collecting data.
- Supports CIP Symbolic and EtherNet/IP, deal for communication to Logix products.
- Device Net scanner for distributed I/O.
- Supports Modbus and ASCII protocols for connectivity to third-party devices.

Micro800-controller	USB programming port	Serial port			Ethernet		DeviceNet (via plug-in)
		CIP serial (client/server)	Modbus RTU (master/slave)	ASCII/Binary	EtherNet/IP (client/server)	Modbus TCP (client/server)	DeviceNet scanner
Micro810°	✓	✗	✗	✗	✗	✗	✗
Micro820°	✓	✓	✓	✓	✓	✓	✓
Micro830°	✓	✓	✓	✓	✗	✗	✓
Micro850°	✓	✓	✓	✓	✓	✓	✓
Micro870°	✓	✓	✓	✓	✓	✓	✓

EtherNet/IP™

DeviceNet™

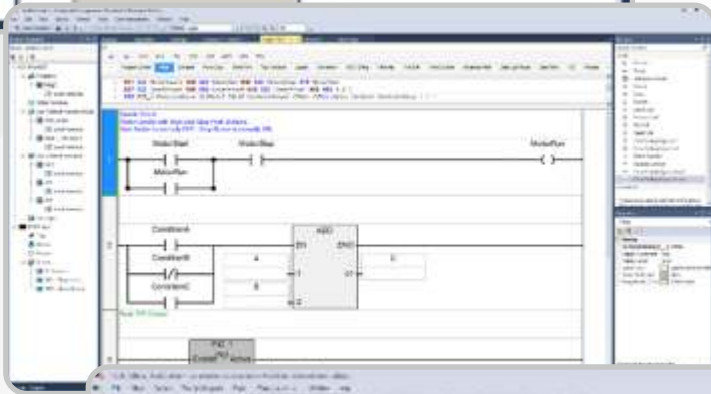


# Connected Components Workbench™ software

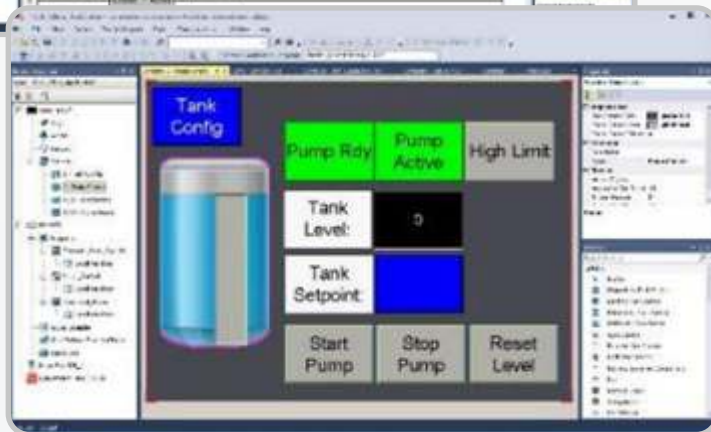
One software package for device configuration, controller programming and integration with human machine interface (HMI)



Configure



Program



Visualize

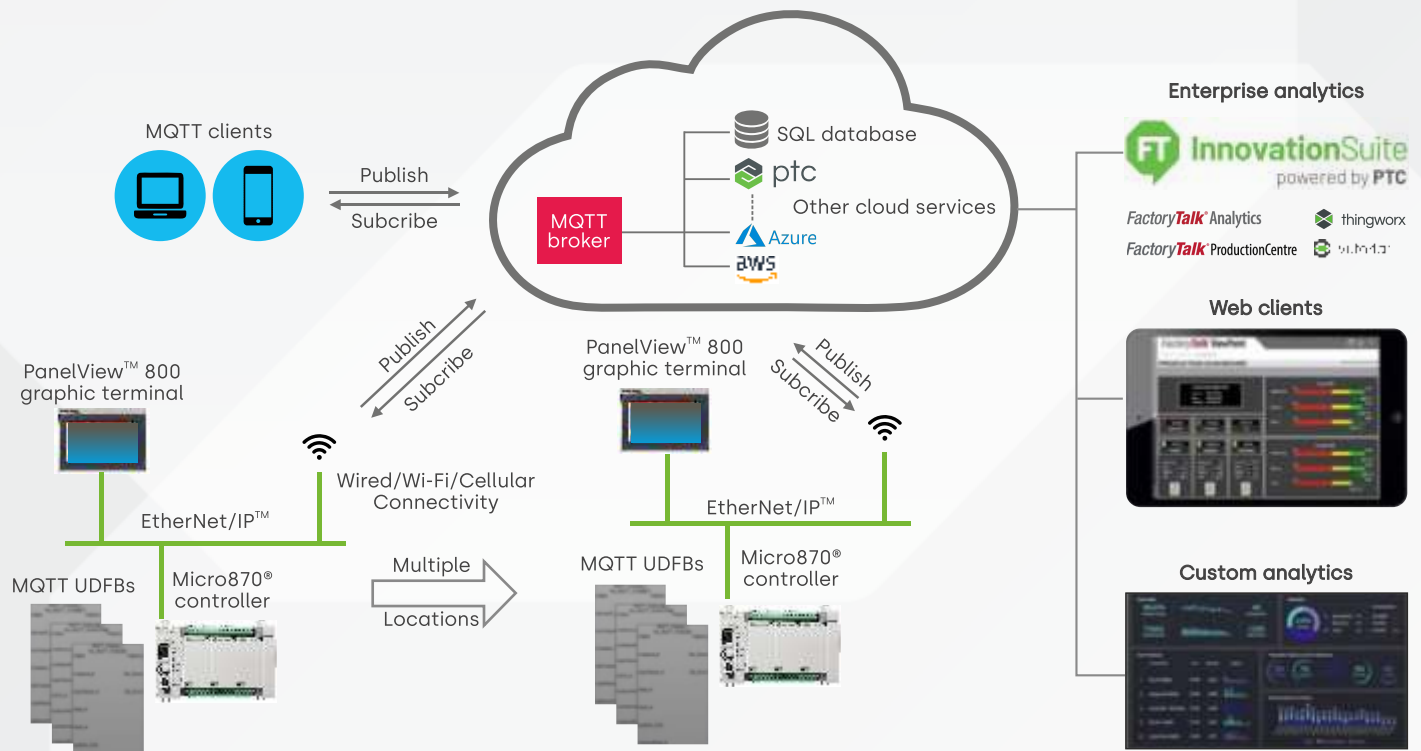


Scan here to know more about

**Connected Components Workbench™ software**

# Industrial Internet of Things (IIoT) Architecture

Micro800™ controller exchanges data using MQTT protocol - broker on premise or in the cloud.



## Consolidated Data of Mirco Family

Controller	IO Counts	Plug in Module	Expansion Module	RIO Expansion	Motion	MQTT Client
Micro810®	12	✗	✗	✗	✗	✗
Micro820®	20-36	✓	✗	✗	✗	✓
Micro830®	10-88	✓	✗	✗	✓	✗
Micro850®	24-192	✓	✓	✗	✓	✓
Micro870®	24-304	✓	✓	✗	✓	✓

Scan here to know more about  
**Micro Control Systems**



Learn from the experts!  
Register for Webinars & Workshops



Scan here to know more about  
our product range



Follow us on 

### Corporate Office

SUDHA CENTRE  
New No.31, Old No.19, 1st Floor  
Dr. Radha Krishnan Salai, Mylapore, Chennai  
Tamil Nadu - 600 004 T: +91 44 4003 0401

[customercare@multivistaglobal.com](mailto:customercare@multivistaglobal.com)  
+91 44 42030400  
[servicecare@multivistaglobal.com](mailto:servicecare@multivistaglobal.com)  
+91 44 40030400  
[www.multivistaglobal.com](http://www.multivistaglobal.com)

